



FEATURES

- Comprehensive integration
- EAW Focusing
- U-Net (audio and communications network)
- EAW Pilot Control and communications
- 1500 watts of class leading power

APPLICATIONS

Corporate A/V, any small to medium sized live sound reinforcement, performing arts venues, houses of worship, retail, ballrooms, theaters, theme parks.

DESCRIPTION

The KF200NT premium 100° conical, 3-way loudspeaker packs more capability and application flexibility into an ultra-compact package. The integration of premium neodymium components and a premium co-axial mid/high frequency component into an adaptable enclosure offers unprecedented performance and utility. The KF200NT consists of a single 10-inch woofer with 2.5-inch voice coil and a coaxial mid-high driver consisting of 8-inch cone MF with 2-inch voice coil, and 1.75-inch voice coil compression driver HF. The KF200NT includes the option for permanent installation via multiple M10 permanent installation points and features 1500 Watts of amplification, EAW Focusing processing, software-accessible DSP, the proprietary U-Net network and a readily adaptable enclosure design.

ORDERING DATA

Description	Part Number
EAW KF200NT Black Active Speaker 115 V	2034933-00
EAW KF200NT Black Active Speaker 230 V	2034933-01
Optional Accessories	
M10 × 37mm Forged Shoulder Eyebolt	0029818
EAW U-Bracket Adjustable S2 BLK [UBKT-S2]	2035472
EAW ACC Leg Adjustable S (2 Per) [ACC-LGS]	2035438
EAW ACC Flytrack S (2 Per) [ACC-FTS]	2035439
EAW ACC Cover Plate S (2 Per) BLK [ACC-CPS]	2035473
Fly Clip with Ring	0001386

Compliance

CE EN 60065:2002, EN55103-1:1997, EN 55103-2:1997,
EN 55103-1, EN55103-2, EN60065
TUV CAN/CSA 60065-03, UL Std No. 60065-03
FCC Part 15

3-WAY SELF-POWERED LOUDSPEAKER 100° × 100°

See *NOTES TABULAR DATA* for details

CONFIGURATION

Subsystem:

	Transducer	Loading
LF	1 × 10 in cone	Sealed
MF	1 × 8 in cone	Sealed
HF	1 × 1 in exit, 1.75 in voice coil compression driver	Co-axial

Operating Mode:	Amplifier Channels	Signal Processing
	Tri-amp LF, MF, HF	DSP w/ EAW Focusing

ACOUSTICAL PERFORMANCE

Operating Range: 74 Hz to 20 kHz

Nominal Beamwidth:

Horz 100°
Vert 100°

Axial Output Limit (whole space SPL):

	Average	Peak
Calculated LF/MF/HF	122 dB	128 dB

ELECTRICAL PERFORMANCE

Input	Type	Electronically balanced XLR
Sensitivity	2.5 V / 10 dBu at Limit	6.2 V / 18 dBu at Clip
Impedance	20 k ohm (balanced to chassis), 10 k ohm (unbalanced)	
Wiring	Pin 1: chassis, Pin 2: signal +, Pin 3: signal -	
Loop	Electronically balanced XLRM	

DSP (50 Mflop 32 bit Sharc):

Encoding 24 Bit / 48 kHz
Filters Proprietary
Latency 2.97 ms

User Addressable DSP

	Array	Box
EQ	10 Parametric	10 Parametric
Delay	1200 ms	1200 ms
Level	15 dB +/-	15 dB +/-

Amplifier

3x
Type Modified Class D
Maximum Output 45 V, 500 W @ 4 ohm
THD + noise < 0.1%
Dynamic Range > 105 dB
Driver Protection Integral DSP limiting

AC Mains (Nominal)

	Connector	Neutrik PowerCon®
	115 V	230 V
Input	100 V to 120 V	220 V to 240 V
Frequency	50 Hz to 60 Hz	50 Hz to 60 Hz
Current:	Idle 0.25 A	0.15 A
	In Rush 0.9 A	0.6 A
	Output Limit 1.6 A	1.0 A
	Fuse Rating 6.3 A	3.15 A

AC Loop:

	Connector	Neutrik PowerCon®
Circuit Breaker Limit	12A	6A

Input Selection Analog, AES Ch 1, AES Ch 2, U-Net (1 - 64)

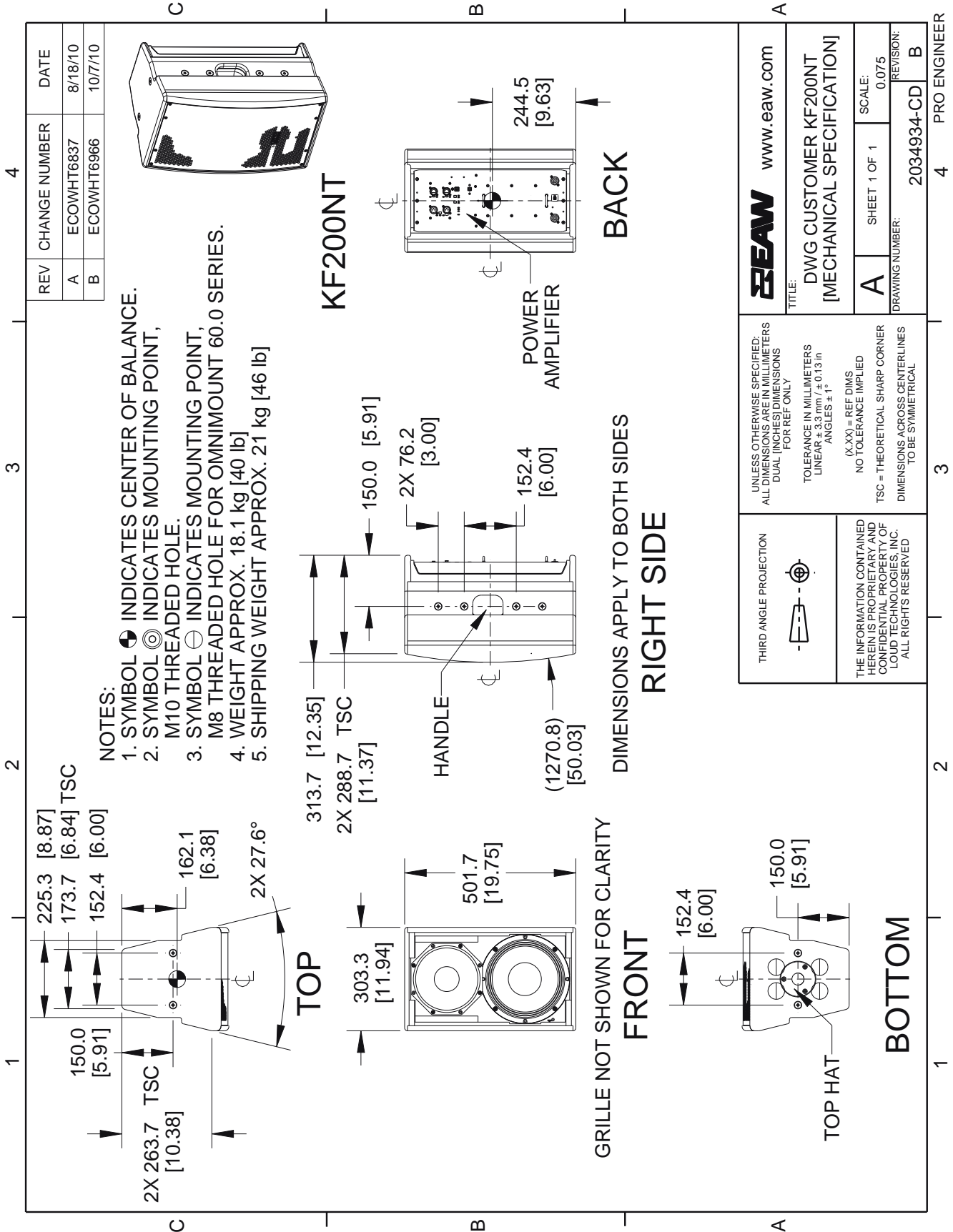
Communication USB, U-Net 1, U-Net 2

CONTROLS

High Pass Filter Normal / 80 Hz / 110 Hz
Mode Normal / Coupled / Monitor

INDICATORS (LED)

Signal Present	System Gain
Limiters Active	Rear Speaker DSP
Clip	Input Selection
Amplifier Status	U-Net Status



NOTE: This drawing has been reduced. Do not scale.